



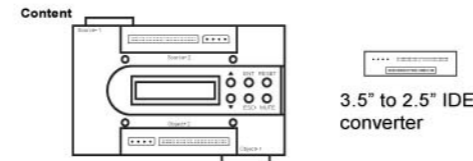
USER Manual Version 1.0

Menu

- 1. Product Introduction 1
- 2. Operating System 2
- 3. Operation 2
- 3.1 Disk Installation 2
- 3.2 The Button Function 3
- 3.3 Operating System Mode 3
- 3.4 Duplicator operating 4
- 3.5 Raid operating 6
- 3.6 Rebuild HDD(RAID1 mode) 9
- 4. Features 10

1. Product Introduction

The supports for all 2.5"/ 3.5" PATA&SATA HDD. It offers PATA & SATA to USB 2.0 interface for connecting with PC or notebook . The design is simply and easy to install and use hard drives. It provides the USB 2.0 high speed of 480Mbps to reach best data-storage performance . has two system mode: one mode is Duplicator mode which has Copy/Compare/Pre-scan/Erase ,another mode is Raid mode which has Raid0/Raid1/Normal/JBOD. It can usage stand alone without PC in Duplicator mode .Display is very easy to catch you sight and definitely offers a convenient and economical way for portable storage solution.



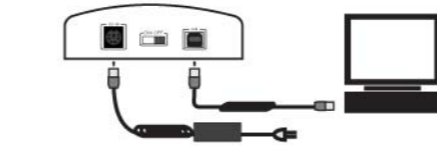
- Content**
- Copy station*1
 - USB cable*1
 - Power supply*1
 - AC cable*1
 - IDE cable*2
 - ATX-4pin power cable*2
 - 3.5" to 2.5" IDE converter*2
 - Protection cap for connectors
 - User Manual



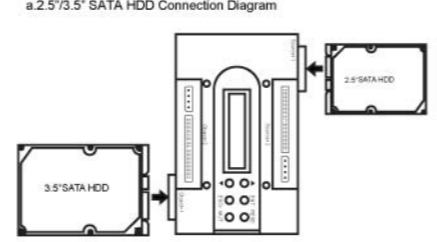
2. Operating System

- 1. Windows 98SE / 2000 / XP / Vista
- 2. Mac
- 3. Linux

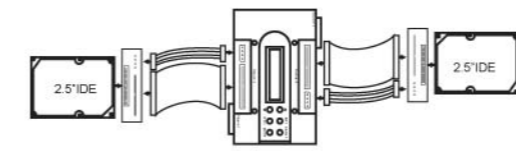
3. Operation



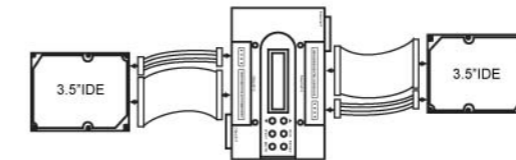
3.1 Disk Installation



b.2.5" PATA Connection Diagram



c.3.5" PATA Connection Diagram



3.2 The Button Function

- ▲ Up ESC Cancel
- ▼ Down RESET Reset station
- ENT Enter MUTE Mute the alarm sound

3.3 Operating System Mode

- 3.3.1 Duplicator Mode**
- 1. Copy HDD
Clone the boot sectors from the source HDD to the object HDD.
 - 2. Compare HDD
Compare the sectors of the source HDD to the object HDD.
 - 3. Pre-scan
Pre-scan the bad sectors of the source HDD.
 - 4. Rescan BUS
Rescan all HDD which connected to the station.
 - 5. Source Size
Show the capacity of the source HDD.

6. Setup

- Show the system information.
 - 7. Erase
Erase all the data of the object HDD.
- Note:** To stop the copy / compare / pre-scan mid-process, hold the "ESC" button down for 3 seconds

- 3.3.2 USB 2.0 Raid Bridge Mode**
Connect the station to you HDD(2 bay), the raid mode as following.
- 1. RAID0 (Stripping mode)
Maximum speed through two simultaneous working HDD.
 - 2. RAID1 (Mirroring mode)
Maximum security by HDD mirroring.
 - 3. JBOD (Spanning mode)
Two HDD combined to one single HDD(no raid).
 - 4. Normal
Two independent HDD.

3.4 Duplicator operating

- 1. Copy HDD**
(1) Use the "▲" and "▼" buttons to select the Menu, and press the "ENT" button to enter the next step



- (2) For example, if "Copy HDD" was selected, more detailed information ,Would be displayed



2. Erase object HDD

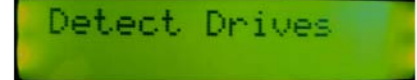
- (1) if you want to erase object HDD ,you can press" ESC" buttons hold on 3seconds ,would be displayed :



- (2) then you select" Down".



- (3) Press the "ENT" button to enter the next step.



- (4) Press the "UP" button to select "YES".

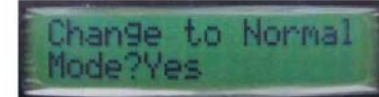


- (5) Press the "ENT" button ,you would find:



3.5 Raid operating

- (1) Use the "▲" and "▼" buttons to change the RAID mode



- (2) Press the "ENT" button to enter the next step.



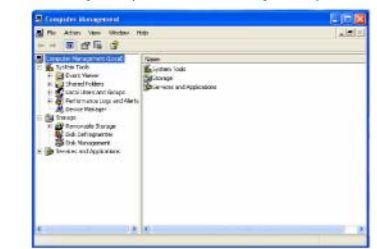
- (3) Press the "ENT" button to ensure change the mode.



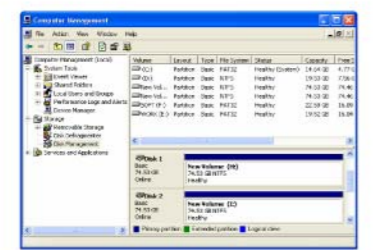
- (4) Show the raid information.



Right click the "My Computer" icon, bringing up the pop-up menu. Chose the "Manage" option. Then select the "Computer Management" option. This allows you to operate the hard disk in your computer



The hard disk information is as follows:
Normal mode



JBOD mode



RAID0 mode



RAID1 mode



3.6 Rebuild HDD(RAID1 mode)

When the system is in RAID1 mode, if one HDD has broken, the system will automatically rebuild.

- (1) If the RAID1 system has broken, the display will show "F mode" and a buzzer will alarm once per second



- (2) Use the "▲" and "▼" buttons to select the "Information" -- "Drive1" or "Drive2"
Note: Drive1 one is the "source HDD", Drive2 is the "Object HDD"



- (3) If the HDD is broken, the display will show "Drive not exist." Now you may replace the broken HDD



- (4) Insert a new HDD and restart the system, it will prompt you to rebuild the RAID1 system



- (5) The display will show the rebuild speed, spare volume and spare time



4. Features

- 1 PATA/SATA HDD portable copy-station suitable for all 2.5" & 3.5" HDD
- 2 USB 2.0 Raid bridge external station suitable for all 2.5" & 3.5" HDD
- 3 Duplicator mode: Copy / Compare / Pre-scan / Erase
- 4 Easy handling over display Raid mode: Raid0 / Raid1 / Normal / JBOD
- 5 Stand alone usage without PC (Duplicator mode)

FCC and CE Radiation Norm

FCC

This equipment has been tested and found to comply with limits for Class B digital device pursuant to Part 15 of Federal Communications Commission (FCC) rules.

CE

This equipment has been tested and found to comply with the limits of the European Council Directive on the approximation of the law of the member states relating to electromagnetic compatibility (89/336/EEC) according to EN 55022 Class B.

FCC and CE Compliance Statement

These limits are designed to provide reasonable protection against frequency interference in residential installation. This equipment generates, uses and can radiate radio frequency energy, and if not installed or used in accordance with the instructions, may cause harmful interference to radio communication. However, there is no guarantee that interference will not occur in television reception, which can be determined by turning the equipment off and on. The user is encouraged to try and correct the interference by one or more of the following measures:

- Reorient or relocate the receiving antenna
- Increase the separation between the equipment and the receiver
- Connect the equipment into an outlet on a circuit different from that to which the receiver is connected to

CAUTION!

The Federal Communications Commission warns the user that changes or modifications to the unit not expressly approved by the party responsible for compliance could void the user's authority to operate the equipment.