

# SI-8511US31C

## Specification



**Revision Notice**  
**R.1.0 2018.10.18**  
Initial release.

**TABLE OF CONTENTS**

1. Appearance ..... 4

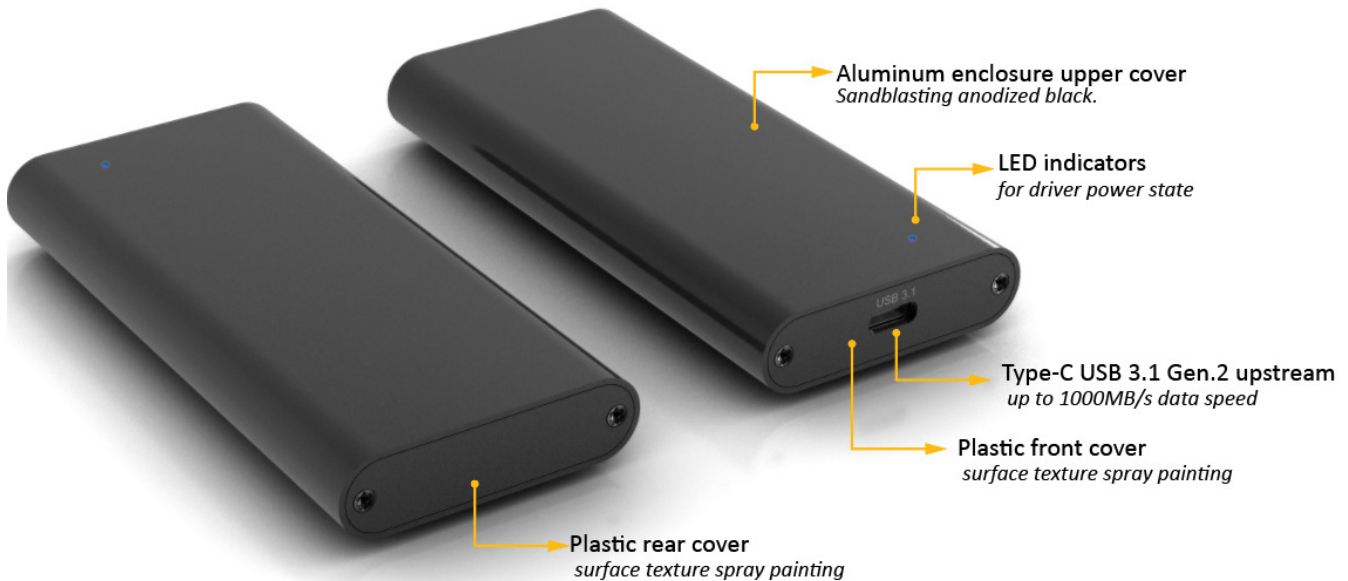
2. Specification ..... 4

3. Features ..... 4

4. Operating System Support..... 5

5. Power & Accessories ..... 5

## 1. Appearance



## 2. Specification

- A. 1 x USB3.1 Gen.2 Type-C port.
- B. 1 x M-Key M.2 PCIe NVMe SSD socket (built-in).

## 3. Features

- A. High quality aluminum body for optimized heat dissipation.
- B. Dimensions: 110.00x50.00x14.10mm.
- C. Functional LED power indicator.
- D. USB3.1 Gen2 type-C captive cable supports 10Gbps to Host, backward compatible with USB2.0 and USB1.1.
- E. Supports 1 x M.2 NVMe SSD transfer speed up to 1000MB/s.

#### **4. Operating System Support**

- A. Mac OS X 10.8.x and future releases.
- B. Windows VISTA, 7 32 and 64 bit, Windows 8/8.1/10 32 and 64 bit and future releases.

#### **5. Power & Accessories**

- A. Retail Color Box x 1.
- B. USB 3.1 Gen 2 Type C to Type C Cable (no e-mark) 0.5 Meter.
- C. Quick Start Guide document x 1.