

HDD Docking Station



User Manual

Introduction

The product of HDD Docking Station is a new high speed of docking station. It directly offers SATA to USB 3.0 interface for connection with PC or notebook. The docking station provides 2.5"/3.5"SATA HDD through the USB 3.0 interface with super high speed of 5Gbps to reach best data-storage performance. With super high speed, it definitely offers a convenient and economical way for portable storage for storage. So HDD Docking Station will become your best choice for docking solution.

Features

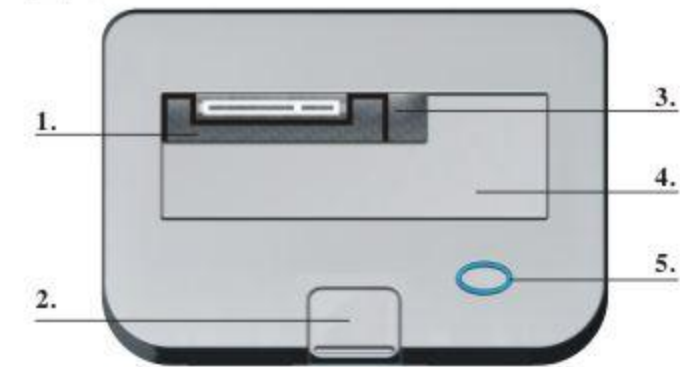
- Support all 2.5"/3.5"SATA HDD
- USB 3.0 transfer rate up to 5Gbps
- Compact size docking design
- Patent design for HDD depart form docking unit
- Power LED and access LED indicate
- Support system Windows98SE/ME/2000/XP/VISTA/7& Mac9.0 or above version

Package contents

AC 110-240V to DC 12V adaptor
Power Cord x 1
USB 3.0 Cable x 1
User Manual x1

Hardware installation

1 TOP



1. Push button to release HDD from SATA connector
2. Button
3. For 2.5" HDD
4. For 3.5" HDD
5. Power and Access LED

2 BACK

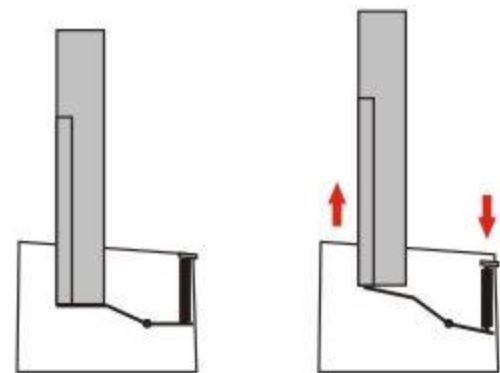


3 Disk Installation



Install 2.5" HDD

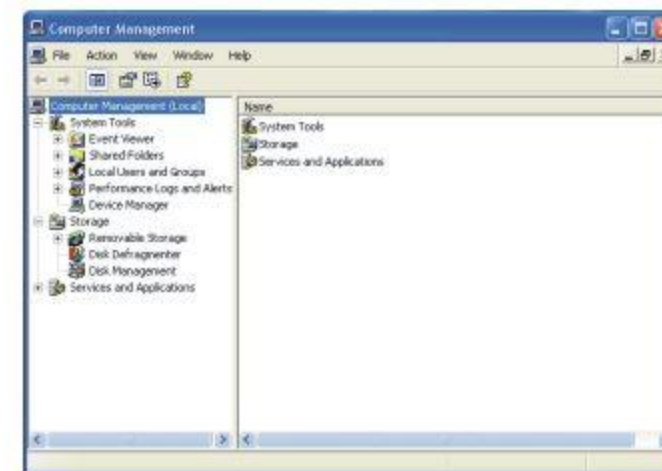
Install 3.5" HDD



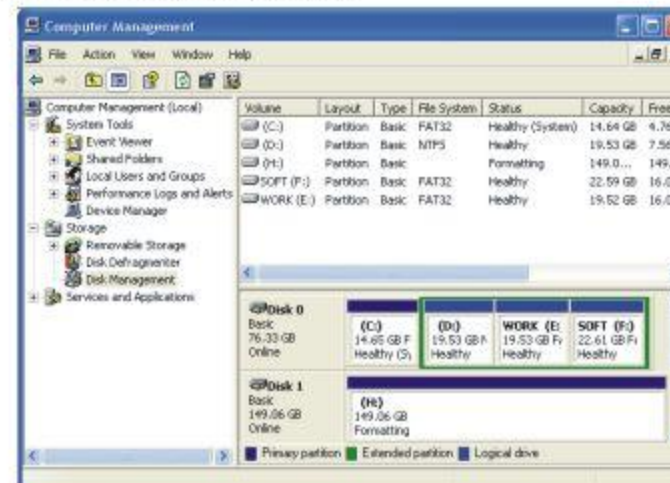
Patent design for HDD depart from docking unit

Operation

- (1) Insert 3.5"SATA HDD, DC adaptor with power cord and USB interface are connected.
- (2) Click "My Computer", right-clicking pop-up menu, click Options "management", pop-up computer management plan was pop-up as follow:



- (3) Click " disks management "plan:



- (4) Right pop-up the additional disks (H :) menus, choose "delete disk segmentation." Click "Segmentation additional disks", followed by a click to operate. Then you can storage your data.

FCC and CE Radiation Norm

FCC

This equipment has been tested and found to comply with limits for Class B digital device pursuant to Part 15 of Federal Communications Commission (FCC) rules.

CE

This equipment has been tested and found to comply with the limits of the European Council Directive on the approximation of the law of the member states relating to electromagnetic compatibility (89/336/EEC) according to EN 55022 Class B.

FCC and CE Compliance Statement

These limits are designed to provide reasonable protection against frequency interference in residential installation. This equipment generates, uses and can radiate radio frequency energy, and if not installed or used in accordance with the instructions, may cause harmful interference to radio communication. However, there is no guarantee that interference will not occur in television reception, which can be determined by turning the equipment off and on. The user is encouraged to try and correct the interference by one or more of the following measures:

- Reorient or relocate the receiving antenna
- Increase the separation between the equipment and the receiver
- Connect the equipment into an outlet on a circuit different from that to which the receiver is connected to'

CAUTION!

The Federal Communications Commission warns the user that changes or modifications to the unit not expressly approved by the party responsible for compliance could void the user's authority to operate the equipment.